

Weatherwood Stain's products are more than a stain, they actually age wood, providing a beautiful weathered color with UV protection! They can be used for any wood application, including floors, millwork, doors, decks, siding & fencing, etc.

WOOD STAIN APPLICATION INFORMATION

Remove any existing finishes by using sandpaper or paint stripper. Prepare wood by sanding with 60-80 grit sandpaper with the grain.

COLOR Wood will absorb stain and each species will turn its own darkest color. **FIRST TEST** an **INCONSPICUOUS SWATCH**. **MIX STAIN WELL** to ensure settled materials are re-dispersed.

USAGE Use a foam roller, rag, brush, or gravity paint sprayer to apply 1 liberal coat of stain. **DRENCH** the wood evenly to ensure consistent color. Do **NOT APPLY** and wipe off. Use when air (ambient) temperature is between 60-90°F (16-32°C) and relative humidity is below 85%.

COVERAGE Gallon treats ~350 sq. ft. of smooth wood.

DRY Wood takes from 20-120 minutes to dry. Longer dry times for damp / humid climates, rough sawn & soft woods. Speed drying with warm air circulation.

TOPCOAT Weatherwood stained wood should be sealed with a Weatherwood topcoat.

★ Check out our Weatherwood Maintenance Oils to Lighten and Darken stained wood.

★ Use Weatherwood Topcoats to hold the weathered wood look and protect wood.



Weatherwood stains are tannin-based, reactive wood stains. Color results depend on wood species type. WW stains interact with raw wood to produce a beautiful aged coloration without pigments, dyes or colorants, for a deeper and clearer final color. Seal wood with Weatherwood topcoats to lock in aged wood appearance.

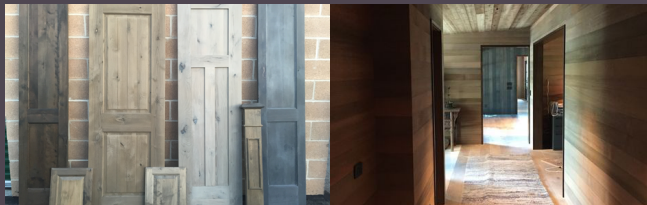
- ◆ Interior & Exterior Use with Topcoat
- ◆ Top Coat Compatible
- ◆ Natural UV Protection
- ◆ Earth Friendly
- ◆ Water-Based
- ◆ Non-Toxic
- ◆ VOC Free

THE NATURAL WAY TO WEATHER WOOD FOR THE RECLAIMED WOOD LOOK



CABINETRY

FLOORING



DOORS

WALLS & CEILINGS



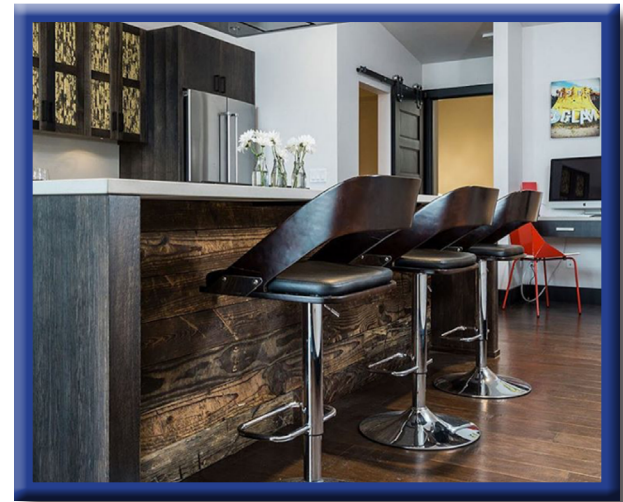
DECKS & FENCES

FURNITURE



Quality Wood Products

WEATHERED WOOD, WITHOUT THE HUNDRED YEAR WAIT



DRIFT WOOD GRAYS

LIGHT OAKING



Light Oaking on RED OAK

Light Oaking on WHITE OAK

Light Oaking on RED CEDAR

LIGHT OAKING



Light Oaking on PINE

Reclamation on ALDER

Reclamation on BEECH

RECLAMATION

RECLAMATION

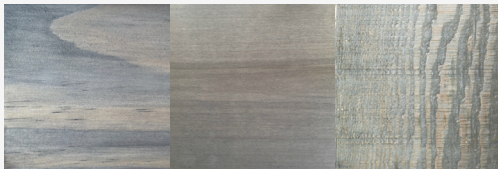


Reclamation on ASH

Reclamation on HARD MAPLE

Reclamation on BIRCH

PINING



Pining on PINE

Pining on POPLAR

Salvage on DOUG FIR

SALVAGE

BARN WOOD BROWNS

RESTORATION



Restoration on WHITE OAK

Restoration on RED OAK

Restoration on ALDER

RECLAMATION



Reclamation on HEMLOCK

Reclamation on PINE

Reclamation on HICKORY

RECLAMATION



Reclamation on RED CEDAR

Reclamation on DOUG FIR

Salvage on HICKORY

SALVAGE

SALVAGE



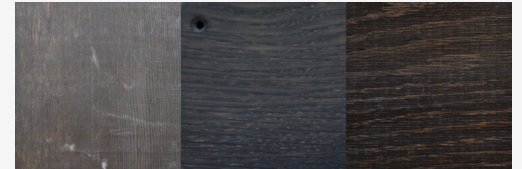
Salvage on REDWOOD

Salvage on RED CEDAR

Salvage on ALDER

DARK SATURATED HUES

RECLAMATION



Reclamation on DOUG FIR

Reclamation on WHITE OAK

Reclamation on RED OAK

RECLAMATION



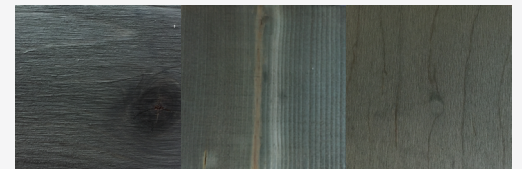
Reclamation on CHERRY

Salvage on CHERRY

Salvage on WALNUT

SALVAGE

PINING



Pining on ALDER

Pining on DOUG FIR

Pining on HARD MAPLE

CHECK OUT SOME OF THE POSSIBLE WEATHERWOOD COLORS (ABOVE.) UNDERNEATH EACH SWATCH YOU'LL FIND THE STAIN COLOR AND WOOD SPECIES.